

Letter from President



Happy 75th Anniversary EWI!

The year was 1938...

- Average cost of a new home was \$3,900.00 – Yep, the decimal is in the right place!
- Average wages were \$1,730.00 – Yep, per year!
- Average price of a new car was \$763.00
- A gallon of gas was 10 cents, bread was 9 cents and a pound of hamburger meat was 13 cents
- Adolf Hitler is Time Magazine's "Man of the Year" (as most influential) and Germany began its invasion of its neighboring countries
- Howard Hughes flies around the world in 91 hours
- Orson Welles panics a nation with the broadcast of "War of the Worlds"

It was also a time when women were being recognized...

- Frances Moulton is elected 1st woman president of a US national bank
- Ella Fitzgerald's "A Tisket, A Tasket" is #1 on the chart
- 1st black woman legislator, Crystal Bird Fauset of Philadelphia is elected
- Pearl Buck is awarded the Nobel Prize for literature
- Snow White and the Seven Dwarfs is the biggest grossing film of the decade

Through the years, we have witnessed the exit of 'fond' friends such as the phonograph, photographic film, video rental stores, records and book stores, just to name a few. But we have also seen the birth of the 'miraculous' – the "i" age (internet, iPhone, iPod, iPad) and along with them, online shopping, Facebook, Twitter, LinkedIn and more.

Driving these changes and discoveries is our constant need to "connect." Lucille Johnson Perkins was a visionary who recognized the importance of networking for all professionals before the term was in vogue. Realizing that non-executives needed to connect to improve not only their business and personal relationships but to respond to their community needs as well. This vision resulted in an organization of 70 charters across the nation and Canada.

Executive Women International has survived and thrived through multiple wars, economic depression, annexation, and liberation. Representatives fortunate to have had the experience of membership have made and retained lifelong relationships that have carried them through personal and business challenges along the way.

Members have opportunities to stretch their creative boundaries via service in director positions. It is in these roles that major transformations can take place. This month's Connect contains the Straw Ballot that seeks nominations for board positions for the 2013-14 year. I encourage you to take on a leadership role – I guarantee that at the very least, you will make new discoveries about yourself!

This month's meeting will celebrate of the best of EWI - membership (Membership Drive), firm sponsorship/presentation and Lucille Johnson Perkin's vision in the nurturing of Connections, Careers, and Communities! I look forward to seeing you all at Tsukiji Fish Market and Restaurant as we toast EWI's 75th Anniversary.

Aloha,
Nadine Uratsuka
2012-2013 President, EWI of Honolulu
Accuity LLP



Happy 75th Anniversary EWI!

Please join us in honoring EWI's legacy and accomplishments and to celebrate the value of membership.

Invite a guest to the April Meeting to be a part of this momentous occasion.

Who knows? They might want to be a part of this fabulous organization!

Wednesday, April 10, 2013

**TSUKIJI FISH MARKET & RESTAURANT
ALA MOANA SHOPPING CENTER**

5:30 PM – Networking

6:00 PM – Dinner/Program

Cost - \$30

SEE YOU THERE!!!

Please contact **Leah Harvell by noon, Wednesday, April 3, 2013** at Leah.Harvell@remingtoncollege.edu or 791.9204 to RSVP your **regrets** OR if you will be bringing a guest. Pre-payment Policy Reminder - dinner payments are due to Leah (mail to 1111 Bishop Street, Suite 400 Honolulu, HI 96813) no later than **Friday, April 5, 2013**.

Note: It is your responsibility to inform the Sergeant-At-Arms by email or telephone by the RSVP deadline if you are unable to attend. You will be billed for any missed meetings unless notice is received 7 days prior to the event date.

Honolulu Chapter Board Meeting Highlights

Tuesday, February 26, 2013
HMSA

Approval of Minutes:

The January 23, 2013 Board of Directors' meeting minutes were approved with corrections.

Treasurer's Report:

- As of January 31, 2013, unaudited account balances were as follows:
 - General Operating Account - \$81,771.00.
 - B/C/DP - \$28,707.46 (before adjustments)
- The February 2013 disbursements with the additional disbursement of \$500.00 for the meeting deposit for the Harbor View Center, site of the March membership meeting, were approved.
- President Uratsuka also reported that the change of tax year from a calendar year end to the fiscal year end of September 30 for reporting Hawaii GET has been filed.

Committee Reports:

ASIST – Karen Mendes

- No report submitted.

Communications and Marketing – Kelly Nishimura

- March Connect scheduled to be released on Friday, March 1, 2013.
- Articles for the April Connect are due on Wednesday, March 13, 2013.

EWISP – April Tengan

- A call for volunteers was made from Director-At-Large April Tengan for the interviews to be held on Saturday, April 13, 2013. Three members of the Board will assist.
- Scholarship Awards Dinner program details and ideas for program are being discussed by the committee.

Membership – Roseann Bronston

- Total: 48 member firms, 52 representatives, 1 sustaining member, 1 life chapter member.
- Due to changes taking place at the corporate office, we will continue to manage administration of new memberships as previously done.
- Membership night: April 10, 2013, Tsukiji Fish Market and Restaurant at Ala Moana.
- Member firm Seasons Quest Insurance & Financial Services will contribute to the program as a sponsor.
- New member assignments: Sam Kasnetz to Membership and Melissa Tree to Philanthropy.

Philanthropy – Leianne Pedro

- Roseann Bronston, Nadine Uratsuka, Francine Lee-Kadota and Leianne Pedro jazzercised with approximately a dozen of the Women's Way Program residents on Friday, February 15. The participation and energy levels were positive and well received. Hagadone donated the fruit and bottled water for the event.
- The committee will discuss ideas for the April event.

2012-2013 Officers & Directors

President

Nadine Uratsuka, Accuity, LLP

VP/President-elect

Cora Kim, Hawaii Prince Hotel Waikiki

Secretary

Susan Miyabara, Punahou School

Treasurer

Wanda Sanchez, Bank of Hawaii

Ways & Means

Pam Unabia, Allied Builders System

Membership Director

Roseann Bronston, Archipelago Hawaii

Sergeant-at-Arms

Jocelyn Palafox, go! Airlines

Programs

Rosanna Costales, Pacific Business News

EWISP Director At Large

April Tengan, Hawaii Medical Service Association (HMSA)

Communications & Marketing Director

Kelly Nishimura, Remedy Intelligent Staffing

Appointed Positions

Advisor

Shelley Okubo, Aqua Hospitality

Bylaws/Parliamentarian

Brenda Kanno, Research Corporation of the University of Hawai'i

ASIST Chair

Karen Mendes, APP Hawaii

Philanthropy Chair

Leianne Pedro, Hagadone Printing Company

Program – Rosanna Costales

April 10, 2013 – Membership meeting

- Location: Tsukiji Fish Market and Restaurant at Ho'okipa Terrace, Ala Moana Shopping Center
 - Theme: EWI 75th Anniversary
 - Cost: \$30.00
- Future months are being planned and discussed.
 - Director Costales reviewed the venues and meeting programs for the remainder of 2013 and shared the survey results from the last membership meeting held at the Plaza Club.

Sergeant-At-Arms – Leah Harvell for Jocelyn Palafox

- There were 31 representatives, 1 sustaining, 10 guests, 7 no-shows at the February 13 membership meeting. 28 of 47 firms in attendance.

Ways and Means – Pam Unabia

- Committee is working on golf tournament details, volunteer assignments, donations, invitation letters, hole-in-one prizes, guest speaker.
- The Board agreed that a towel with a clip should be pursued instead of a towel without a clip.
- Director Unabia shared some ideas the committee had for additional fundraisers. The Board suggested that she look into the “Give and Get” program at Ward Centre.

Unfinished Business:

No unfinished business to report.

New Business:

The Board discussed the statute of limitations for a new member firm posting (i.e. time between posting to actual membership). The Board concurred that a period of six months is adequate. President Uratsuka and Parliamentarian Brenda Kanno will develop verbiage to include in our Chapter Standing Rules that will be presented to membership for adoption.

Next Meetings:

- The March Business Meeting is scheduled for Wednesday, March 13, 2013 at 5:30 pm at Nico's Pier 38.
- The next Board of Directors Meeting is scheduled for Wednesday, March 27, 2013 at 11:30 am, at Bank of Hawaii, 5th Floor.

The meeting adjourned at 7:25 pm.

Firm Name Change Announcement

Member firm Aqua Hotels and Resorts has changed its name to Aqua Hospitality! Aqua's representative, Shelley Okubo, can now be reached at sokubo@aquahospitality.com and 808.748.2244.

DATES TO NOTE**April 10, 2013**

Membership Drive/EWI 75th Anniversary/Special Guest Speaker, Tsukiji Fish Market and Restaurant at Ala Moana Center, Ho'okipa Terrace

April 12, 2013

Philanthropy Committee's Hana Hou Jazzercise Hour, Salvation Army Women's Way 6:00-7:00 pm

May 8, 2013

EWISP Awards Dinner, Waialae Country Club

June 12, 2013

Business Meeting, Sheraton Waikiki, Honolulu Suite

July 10, 2013

ASIST Awards Dinner, Oahu Country Club

August 14, 2013

Membership Meeting, Location tbd

August 23, 2013

18th EWI Annual Golf Tournament, Hawaii Prince Golf Club

September 11, 2013

Business Meeting, The Plaza Club

September 18-21, 2013

LCAM (EWI's 75th Anniversary), San Diego

October 9, 2013

Membership Meeting, Location tbd

November 13, 2013

Membership Meeting, Location tbd

December 4, 2013

Membership Meeting, Location tbd



CONNECTIONS | CAREERS | COMMUNITY

Straw Ballot

2013 – 2014 OFFICERS AND DIRECTORS
EWI OF HONOLULU

The Nominating Committee seeks your input on individuals willing to serve our chapter...a rewarding experience!

A minimum of three (3) directors, which includes the Vice President/President-Elect, must have served on the Chapter Board the previous year. No director shall serve more than five (5) consecutive terms.

Enter your first choice for each position, and if desired, your second choice. The Nominating Committee will present the proposed slate of officers and directors at the June 12, 2013 membership meeting. Thereafter, additional nominations may be made to President Nadine Uratsuka, in writing by any five (5) representatives prior to August 12, 2013, at which time the nominations are automatically closed. All nominees must have indicated their willingness to serve, if elected.

	First Choice	Second Choice (optional)
Vice President/President-Elect	_____	_____
Secretary	_____	_____
Treasurer	_____	_____
Sergeant-at-Arms	_____	_____
Membership Director	_____	_____
Program Director	_____	_____
Communications & Marketing	_____	_____
Ways and Means Director	_____	_____
Director-At-Large EWISP	_____	_____

Note: Cora Kim was elected for a two year term as Vice President/President-Elect and therefore will assume the Presidency in 2013-2014.

Send this form to the Nominating Committee Chair Shelley Okubo, c/o Aqua Hospitality 808.748.2244 or email to sokubo@aquahospitality.com.



2013 Na Wahine Alaka'i Leadership Award

The Na Wahine Alaka'i Leadership Award was established in 2004 to recognize the talent and leadership potential of EWI of Honolulu representatives. We are pleased this year to award up to \$1,600 in monetary support for a representative to attend the annual EWI Leadership Conference and Annual Meeting (LCAM) and Academy of Leadership in San Diego, CA, September 18-21, 2013. The Awardee will be responsible for all other expenses related to attendance. Receipts must be provided in order to receive reimbursement of expenses up to the awarded amount.

Selection Criteria:

- Nominees must be an active representative in good standing of EWI of Honolulu for a minimum of one year.
- Past Presidents, previous awardees, sustaining members, and chapter life members are not eligible.
- Nominees must regularly attend monthly Chapter meetings and participate fully in committee assignments and meetings.
- Preference will be given to first-time attendees to LCAM.
- Individuals selected must commit to serving in a Chapter Board position.

Program Guidelines:

- Nominations may be submitted by any EWI member (Representative or Executive) or self-nominated.
- Nominees must complete a Nomination Form that includes a narrative (attach a separate write-up; not to exceed one page) as to why the individual is worthy of this award.
- Awardee shall present a report to the Chapter membership on the LCAM experience and the sessions attended.

Nomination Form

Nominee			
Firm			
Representative Since			
Attended LCAM Before?	No _____	Yes _____	Year & Place: _____
Active on Committee?	No _____	Yes _____	Committee: _____
Attends Monthly Mtgs?	No _____	Yes _____	# Attended this Year: _____

Nominated by: _____
Printed Name/Signature

Date

Phone

Email

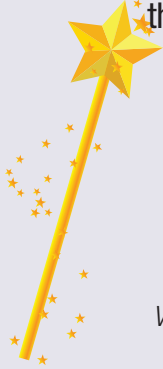
Submit to: Nadine Uratsuka by **April 30, 2013**

Phone/Email: 808.531.3483

nadine.uratsuka@accuityllp.com

Imagine the Possibilities

Join us and invite your executive for a special evening to honor the Executive Women International 2013 scholarship winners.



Date: Wednesday, May 8, 2013

Time: 5:30 p.m.: Networking

6:00 p.m.: Dinner

Place: Waialae Country Club, Kahala/Diamond Head Room

Cost: \$45 per person

Wow! EWI has awarded \$188,660 in scholarships as of 2013.

THIS YEAR, WE WILL BE AWARDING THE FOLLOWING:

First place: \$5,000

Second place: \$3,000

Third place: \$2,000

Lynette Tamaye Notebook Award: \$500

JUDGES FOR OUR EVENT:

Donalyn Dela Cruz, Director of Communications, Hawaii State Department of Education

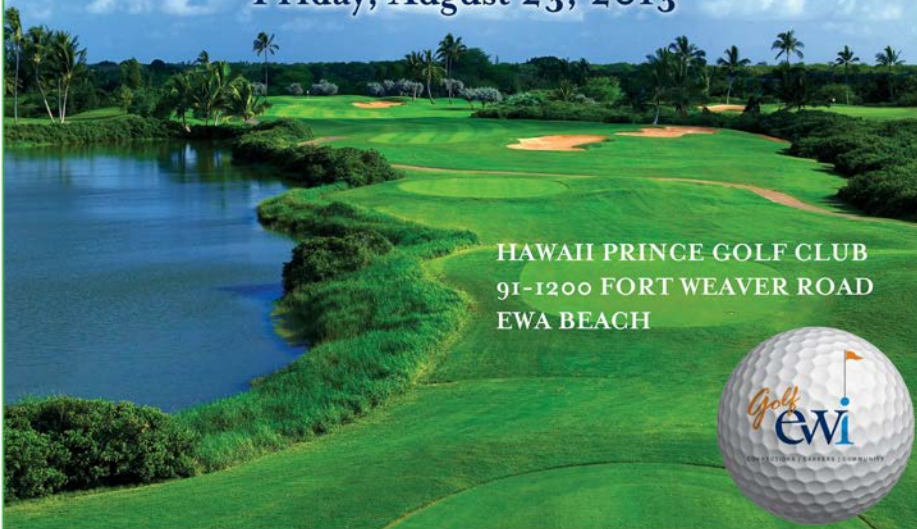
Heidi Kalepa, Corp Dir/HR, Aqua Hospitality

Takashi Ohno, Member, Hawaii State House of Representatives, District 27

The EWI Scholarship Program is to encourage and assist high school seniors (male or female) who plan to pursue a higher education degree in any business or professional field of study at an accredited college or university. Besides academic performance, a new component of the program is financial need. Each high school may select one student to participate in the competition. EWI of Honolulu's first-place winner will proceed to the corporate competition for a chance to win one of six scholarships, which range from \$1,000 to \$5,000.

SAVE THE DATE

18th ANNUAL EWI GOLF TOURNAMENT
Friday, August 23, 2013



HAWAII PRINCE GOLF CLUB
 91-1200 FORT WEAVER ROAD
 EWA BEACH



Happy Birthday!

Rosanna Costales	April 6
April Tengan	April 8
Leah Harvell	April 8
Jennifer Ihara	April 16
Brenda Kanno	April 20
Wanda Sanchez	April 27

Philanthropy Connect Updates

April 2013

Our chosen non-profit is The Salvation Army's "Women's Way", a residential and outpatient treatment program in Kaimuki, providing substance abuse treatment specifically designed for women, their infants and toddlers. The program aims to:

- Break the cycle of chemical dependence
- Strengthen the family unit and mother-child relationships
- Assist women to develop the knowledge, skills and attitudes to raise physically and emotionally healthy children
- Help children with emotional, behavioral and developmental problems to develop skills to be more successful at home and school

Here's how EWI of Honolulu has already been of service:

- December 2012:
 - Book drive for the children
 - Toiletry drive for the women
 - Bell ringing downtown at Longs Drug Store for the Salvation Army
- February 2013:
 - Jazzercise hour with a dozen residents led by Roseann Bronston
 - Shared water and fresh fruit with the residents

Here's what's up next – SAVE THE DATES!

- Friday, May 10, 2013 – 6:00-7:30 pm
 - Massage and make up pampering before Mother's Day for Women's Way resident moms.
 - Need four volunteers for childcare during this time so moms can enjoy
- June 2013 – date tbd, planter boxes
 - Herb Garden sponsored by EWI of Honolulu and Sheraton Waikiki. Cultivate an herb garden for the residents as they make healthy choices with food too! Planter boxes already in place need cleaning up. Contest to name the garden amongst residents and EWI signage to ID and nurture growth.
- Saturday, July 20, 2013 from 1:00-4:00 pm
 - Ohana activity for EWI and the residents' families complete with BBQ meal, games and fellowship
- Friday, October 18, 2013 – October Bookfest - 6:00-7:30 pm
 - "Back to Books" reading day/night, book drive for the children, present the books as gifts for each child and read for 15 minutes
- Friday, November 8, 2013 – 6:00-7:30 pm
 - Attitude of Gratitude event, create Thank You Cards with residents and children
- Friday, December 6, 2013 – 6:00-7:30 pm
 - Holiday Cookie Decorating/Ornaments

DID YOU KNOW . . .

Who is responsible for the affairs of EWI of Honolulu?

The business and affairs of the chapter is managed and directed by a Board of Directors (Chapter Board) comprised of at least six (6) and no more than ten (10) Directors, each of whom shall be a representative of a Member Firm. If a Director ceases at any time to be qualified, such Director's term of office will automatically terminate.

The Chapter Board is composed of the following Officers and Directors:

Officers:

- (1) President
- (2) Vice President/President-Elect
- (3) Secretary
- (4) Treasurer
- (5) Sergeant-At-Arms

Directors:

- (1) Membership
- (2) Program
- (3) Communications and Marketing
- (4) Fund Raising (Ways & Means)
- (5) Director-at-Large (EWISP for our chapter)

The election of Officers and Directors takes place at the chapter's annual business meeting (September for EWI of Honolulu) and per the Bylaws, has to be prior to September 30.

The Officers and Directors serve a one-year term to begin at the close of the chapter's annual business meeting, except that the individual elected to serve as Vice President/President-Elect will be elected for a two-year term.

A minimum of three (3) of the Directors will have served on the Chapter Board the previous year, one of whom may be the Vice President/President-Elect. The Vice President/President-Elect will automatically ascend to the office of President.

Except for the Director who is elected as Vice President/President-Elect, no Officer or Director may serve more than five (5) consecutive terms. An Officer or Director who has served more than half a term is considered to have served a full term in that office.

The Nominating Committee proposes a slate of Officers and Directors to the membership. The membership has an opportunity to forward names of potential candidates to the Nominating Committee via the Straw Ballot process. Individuals interested in serving in Board positions may also advise the Nominating Committee.

The Nominating Committee will be proposing a slate of Officers and Directors for 2013-14 in June, after which nominations may be submitted in writing by any five (5) Representatives to the President up to and including thirty (30) days prior to the annual business meeting, at which time the nominations are automatically closed.

EWI of Honolulu's 2012-2013 Nominating Committee members are Shelley Okubo (chair), Cora Kim, and Adele Tasaka.