

Letter from the President

Aloha EWI of Honolulu!



Thank you to Candace Yuen (Aston Waikiki Beach Hotel) and Kim Oshiro (Aston Waikiki Sunset) and the ASIST committee for an incredible scholarship dinner. Being able to award \$20,000 to these amazing women who have persevered through hard times to make a better life for themselves is so heartwarming.

August is a busy month for EWI. We have our annual golf tournament on August 3. This is our primary fundraiser for our scholarship programs. It is not too late to volunteer or donate items for our tournament. The success of the tournament is truly dependent on the support our member firms and representatives. Thank you to Roseann Freitas and her committee for all their hard work.

Also, please don't forget about our next dinner meeting on Wednesday, August 8th as Francine Lee Kadota and her Program Committee have planned another great program for us, which is the committee's final one for the current year.

As the chapter year comes to an end, the current board and incoming board will be meeting jointly on Wednesday, August 29, at the Sheraton Waikiki Leahi Board Room.

I look forward to seeing everyone at the August 8 meeting and of course the golf tournament preceding that on August 3!

Mahalo,
Michelle Nakahara
2017 – 2018 EWI of Honolulu Chapter President

Think Big

My New Zoo, McGrew Zoo,
will make people talk.
My New Zoo, McGrew Zoo,
will make people gawk
At the strangest odd creatures
that ever did walk.
I'll get, for my zoo,
a new sort-of-a-hen
Who roosts in another hen's
topknot, and then
Another one roosts
in the topknot of his,
And another in his,
and another in HIS,
And so forth and upward
and onward, gee whiz!
~ If I Ran the Zoo



HULILAU

THE TURNING POINT

Hawai'i is at another transformative turning point in its history and this presentation establishes an order to random events and initiatives, locally and globally, that affirms this dynamic assertion.



John DeFries III

Executive Director
Native Hawaiian Hospitality Association

Born and raised in Waikīkī, John grew up surrounded by elders within his family who were steeped in the traditional practices of the Hawaiian culture. This childhood setting embedded in him, a life-long

awareness and respect for the symbiotic relationships that exist between community and culture, nature and commerce.

Utilizing 20 years of experience, John established Native Sun Business Group, Inc. (NSBG) in 1993. The business consulting and project management firm focused primarily on client engagements within Hawaii's hospitality and real estate development industries. John is a former board member of the Native Hawaiian Hospitality Association and currently serves on the board of directors of Kualoa Ranch and the School of Sustainability at Arizona State University.

For the past twenty-five years, John and his wife Ginny have lived in Kona, Hawaii.



THE PLAZA CLUB
900 FORT STREET MALL

AUGUST 8, 2018
5:30PM NETWORKING
6:00PM DINNER

\$50 MEMBERS
\$60 GUESTS
FREE PARKING AFTER 5PM

MENU

Pulehu Style Chicken
Fresh Island Fish w/ Lobster Basil Sauce
Served with White Rice & Seasonal Vegetables
Mesclun of Greens
Pasta Salad with Peppers & Olives
Watercress Tofu
Basket of Bread, Butter
An Assortment of Club Made Desserts to include:
Bread Pudding with Sauce Anglaise
Tray of Tropical Fruits
Coffee (Regular and Decaf)
Tea (Hot and Iced)

RSVP BY
AUGUST 1, 2018

Mail payments to Ariel Moniz
c/o Infinium Interiors
850 Mililani Street 2nd Floor
Honolulu, HI 96813

808-777-5490
amoniz@infinium-interiors.com

Chapter Leadership



Michelle Nakahara
Starwood Hotels in Waikiki
President



Kim Asuncion
Aston Waikiki Sunset
President-Elect



Taryn Kabei
C. S. Wo & Sons
Secretary



Jenny Li
First Foundation Bank
Treasurer



Ariel Moniz
Infinium Interiors
Sergeant-at-Arms



Karen Mendes
American Solutions
for Business
Retention & Recruitment



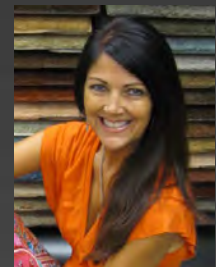
Francine Lee-Kadota
Meridian Properties Inc.
Programs



Abigail Jacinto
Robert Half International
Communications & Marketing



Roseann Freitas
Archipelago Hawaii
Ways & Means



JaDawn Perez
American Carpet One
EWISP Director at Large



Brenda Kanno
Research Corp of the Univ. of HI
By-Laws/Parliamentarian



Candace Yuen
Aston Hotels
ASIST



Kim Oshiro
Hilton Waikiki Beach
ASIST



Leslie Kaiser
Hawaiian Electric
Philanthropy



CONNECTIONS | CAREERS | COMMUNITY

Mission

Executive Women International (EWI) brings together key individuals from diverse businesses for the purpose of promoting member firms, enhancing personal and professional development, and encouraging community involvement.

Vision

To be a global women's organization of 5,000 engaged members empowering others for positive change

Values

Integrity | Excellence | Respect | Collaboration

ewiconnect.com
ewi@ewiconnect.com

Honolulu Chapter Board Meeting Highlights

June 27, 2018

Treasurer's Report:

- May 2018 financials were disbursed, reviewed and approved by the board.

Committee Reports:

ASIST – Candace Yuen and Kim Oshiro

- Four Winners – 2 awards at \$8,000 and 2 awards at \$2,000 each.
- Speaker: Ann Mahi.
- Judges gifts:
 - \$50 Neiman Marcus gift cards for judges.
 - Crystal vases donated by Adele.

Communications and Marketing – Abigail Jacinto

- 06/26 – Newsletter distributed to membership and goes on website
- 07/05 – Email reminder to Board that articles are due by 07/11/18.
- 07/11 – Articles due from committees for newsletter
- 07/13 – Send articles to C&M committee to proof
- 07/16 – Submit articles to Mayuki
- 07/23 – Mayuki will send draft for approval. Mayuki needs 3-4 days to draft connect
- 07/24 – Revisions and updates to Mayuki
- 07/27 – Final Draft from Mayuki for C&M committee and President to proof
- 08/01– (1st of the Month) Newsletter goes on website and out to membership
- 08/15 – Articles due from committees for September newsletter
- Website Updates: EWISP and ASIST page updates submitted to Cowabunga Computers by July 18, 2018. Please submit any other website updates to Abigail.Jacinto@accountemps.com
- Committee lost member rep, Iprita Bhattarai, with Bank of Hawaii

EWISP – JaDawn Perez

- Checks to schools were issued for:
 - Anna Kimata \$2,000
 - Bradley Wood \$3,700
 - Keilani Kim \$5,000
 - Kamalani Nagahama \$1,000
 - Catherine Palmer \$3,700
- Total scholarship check request as of June 27, 2018 \$15,400.
- Remaining scholarship awards \$4,600 for Mika Domingo and Justina Bui.
- Deadline for enrollment verification forms from awardees is August 15, 2018

Retention & Recruitment – Karen Mendes

- Committee Meeting – to be advised
- Prospective Member Dinner – Kim Castillo, Bowers + Kubota (July dinner)
- Current Membership: 49 firms, 51 representatives + 1 firms pending reps
- Replacement Reps – Bank of Hawaii, Karynthya Trevino
- Member Firm Changes – none
- New Member Firm Application – Keller Williams
- Membership Renewal Reminders: Century Link, Hawaii Audiology, Make-a-Wish, Office Girl Empire, Pacific Guardian Life, Robert Half.
- Chapter Reimbursement from Corporate: \$210
- Current Fiscal Year Totals:
 - 2 new firms / 54 total firms
 - 4 new/replacement reps over 54 total reps
 - 35 Renewals completed by March 31 2018
 - 1 Replacement Rep introduced at June meeting

2017-2018 Officers & Directors

President

Michelle Nakahara
Starwood Hotels in Waikīkī

President-Elect

Kim Asuncion
Aston Waikīkī Sunset

Secretary

Taryn Kabei
CS Wo & Sons

Treasurer

Jenny Li
First Foundation Bank

Sergeant-at-Arms

Ariel Moniz
Infinium Interiors

Communications & Marketing Director

Abigail Jacinto
Robert Half International

Retention & Recruitment Director

Karen Mendes
American Solutions for Business

Programs Director

Francine Lee-Kadota
Meridian Properties Inc.

Ways & Means Director

Roseann Freitas
Archipelago Hawai'i

EWISP Director at Large

JaDawn Perez
American Carpet One

Appointed Positions

ASIST Chair

Candace Yuen
Aston Waikīkī Beach Hotel
and
Kim Oshiro
Hilton Waikīkī Beach Hotel

Philanthropy Chair

Leslie Kaiser
Hawaiian Electric Company

Bylaws/Parliamentarian

Brenda Kanno
The Research Corporation of the
University of Hawaii

Advisor
(vacant)

Philanthropy – Leslie Ikei

- No new updates.

Programs – Francine Lee-Kadota

- August 8, 2018 Dinner meeting will be held at the Plaza Club. Cost for buffet dinner will be \$50 for members and \$60 for guests; free validated parking after 5 pm.
- Next committee meeting – via email.

Sergeant-at-Arms – Ariel Moniz

- 28 representatives and 4 guests attended the June 13, 2018 meeting held at the Neal Blaisdell Center
- 48% member representatives were in attendance.
- Next committee meeting - TBD

Ways and Means – Roseann Freitas

- Updates
 - 44 Teams as of June 23, 2018
- Completed
 - Sponsorships – written and verbal – Platinum (4), Gold (12)
 - Teams – written and verbal commitments – 26
 - Total teams playing to date – 44
 - Need 48 teams to make minimum
- Needed
 - Volunteers, wish list items, donations for prizes/auction/raffle, teams, sponsors.
- Next meeting July 28, 2018 12:30pm, Tiki’s Grill & Bar.

New Business:

- None

Next Meetings:

- August 29, 2018: Joint Board Meeting, 5:30 pm, Sheraton Waikiki
- September 26, 2018: Joint Board Meeting, 5:30 pm, Sheraton Waikiki

DATES TO NOTE

Friday, August 3, 2018:
23rd Annual Scholarship Golf Tournament at Hawaii Prince Golf Club

Wednesday, August 8, 2018: Chapter Meeting at The Plaza Club with guest speaker, John DeFries III

Happy Birthday!

Kim Oshiro	Aug 5
Leonn Kaleikini	Aug 6
Adele Tasaka	Aug 18
Leslie Kaiser	Aug 18
Mika Miyashiro	Aug 19
Sherry Mae Ravago	Aug 22
Eleanor Urakawa	Aug 22
Cora Kim	Aug 23



CONNECTIONS | CAREERS | COMMUNITY



@ewihonolulu



facebook.com/Executive-Women-International-EWI-Honolulu-Chapter-323622051002758/



@ewihonolulu



Executive Women International (EWI) Honolulu

#ewihonolulu

Directory Changes

Please notify Retention & Recruitment Director, Karen Mendes, of American Solutions for Business of any changes in your address, email, telephone number, etc. so the change can be made in the directory.

kmendes@americanbus.com or (808)723-4577

Share your news and photos in the monthly CONNECT
Contact: Abigail Jacinto at
abigail.jacinto@accountemps.com or (808)531-8056
Submission deadline for September issue: August 15, 2018



The 2018 ASIST program culminated with the awards dinner on July 11, 2018 and the announcement of the chapter winners:

- **Chanele Paresa** of the University of Hawaii at Manoa (\$8,000 award), pursuing a Doctorate of Nursing Practice
- **Jayleen Barino** of University of Hawaii at Manoa (\$8,000 award), pursuing her Bachelor's of Science in Exceptional Students and Elementary Education
- **Dionne Sesepasara** of University of Hawaii at Manoa (\$2,000 award), pursuing her Bachelor's degree in Animal Science.
- **Daniella Wallace** of University of Hawaii at Manoa (\$2,000 award), pursuing a Bachelor's degree in Natural Science

The 2018 ASIST committee awarded a total of \$20,000 in scholarships.

This year there were 27 applicants, out of which eight finalists emerged. The 2018 judges were Ann Mahi, Complex Area Superintendent of the Nanakuli-Waianae Schools, Patricia Mau-Shimizu, Executive Director of the Hawaii State Bar Association, and Shari Chang, Chief Executive Officer of Girl Scouts of Hawai'i.





Na Wahine Alaka'i Leadership Awards

EWI of Honolulu is proud to announce the winners of our Na Wahine Alaka'i Leadership Awards.

- Jenny Li, First Foundation Bank
- Ariel Moniz, Infinium Interiors
- Jenni Liu, Tiki's Grill & Bar

They will be attending the annual EWI Leadership Conference and Annual Meeting (LCAM) and Academy of Leadership in Raleigh, North Carolina from September 19 – 22, 2018 with President Elect Kim Asuncion, Aston Waikiki Sunset and next year's President Elect Roseann Freitas, Archipelago Hawaii.

The Na Wahine Alaka'i Leadership Award was established in 2004 to recognize the talent and leadership potential of EWI of Honolulu Representatives. We are pleased this year to have three Representatives attend. Congratulations to our winners!





SAVE THE DATE

*Annual Business Meeting &
Installation of the 2018-2019 Board of Directors*

Quorum is required.

Please invite your executive to this special event!

Let Your Light Shine

Wednesday, September 12, 2018

5:30p.m. Registration

6:00p.m. Dinner

Waialae Country Club

4997 Kahala Avenue

PROFESSIONAL DEVELOPMENT WEBINAR

Productive Conflict – From Unhappy Discord to Well Managed Debate

Presenter: Lori King-Taylor

Tuesday, August 7, 2018
3:00 PM EDT / 12:00 PM PDT



Many business leaders imagine that success is harmonious and creativity friction free. They could not be more wrong. All organizations have conflict. That's inevitable when you bring people together. In the best companies, where a wide diversity of personalities and disciplines work together, conflict isn't just natural--it's productive. That happens only when people know how to handle it well. This workshop will give you 3 things to help you master your conflicts and embrace active debates!

Lori King-Taylor has extensive experience in leadership development, and organizational effectiveness. For more than 20 years, she has worked with a wide variety of industries including: automotive, educational, financial services, manufacturing, aerospace, technical and non-profit organizations. Lori specializes in assisting companies and their employees develop the skills and strategies needed to improve individual, team and organizational performance. She specializes in human performance development including areas of effective communication skills, executive image, leadership development, motivation, conflict resolution, meeting facilitation and team building. She is certified to administer the Everything DiSC Personality Assessment, 360 Evaluations, The Five Behaviors of a Cohesive Team and the Index of Emotional Intelligence. She is a Certified John Maxwell Trainer and Executive Coach and in 2014, Lori had the prestigious honor of speaking at the TEDx conference.

Join the meeting!

Register at <http://ewiconnect.com/professional-development/webinars/>