

## Letter from President



Happy May Day!

Mahalo! to George Nabeshima and Fay Kauanoë of member firm Seasons Quest Insurance & Financial Services and to our Program and Membership Committees for a wonderful April meeting. The celebration of EWI's 75th Anniversary was a huge success as we Connected with friends old and new and shared Career and Community information. We had a record number of guests in attendance and the financial presentation was filled with valuable information for all.

May is a month of many honors. We honor our mothers for without their guidance, nurturing and love we would not be who we are today. In Hawaii we honor the lei, which is synonymous with Aloha – expressing greetings, congratulations, love and appreciation. No other place in the world has the distinction of having such an admired yet simple symbol that conveys a multitude of emotions.

May is the month where we honor and recognize outstanding high school seniors, recipients of our Chapter's EWI Scholarship Program (EWISP) Awards. Since its inception in 1974, the Honolulu chapter has proudly participated in this program and has awarded over \$200,000 in scholarships.

As we well know, the effects of our financial and business climate are far reaching. Shrinking budgets and cost-cuts heighten the need that we fill through our philanthropic efforts. The scholarships provided by EWI, our support of literacy initiatives and partnering with programs are ways of 'giving back' and connecting with our communities.

EWI's scholarship program provides opportunities to our future leaders, paves the way for future philanthropists and validates their current financial need while simply stating, "We Care!" The heartwarming stories of our students are spellbinding, the energy they convey is contagious, and their strength in spirit is inspiring. Our scholarship judges are often torn in selecting a 'top' winner as every student seems equally deserving. Applicants have been so exceptional that judges and firm executives who have participated in our program have been compelled to increase our award amounts after getting to know our students and of how they have championed their challenges.

This year is another exception. The caliber and need of our applicants were so exceptional that member firm HMSA has contributed additional funds for us to provide each of our semi-finalists with an award! The true reward and return of investment evident in the appreciative faces of these amazing and deserving individuals who are our future to a brighter and sustainable tomorrow. Don't miss this event, be a part of creating an unforgettable memory as we recognize our 2013 EWISP Award winners!

May is indeed a month of honors. We honor our mothers who have paved the way for us to be all that we can, enabling us to pave the way for others to come. We honor the lei, a beautiful symbol of love, appreciation and gratitude. Join us as we also honor our inspiring EWISP students on May 8 at the Waialae Country Club.

Aloha,  
Nadine Uratsuka  
2012-2013 President, EWI of Honolulu  
Accuity LLP



# Honolulu Chapter Board Meeting Highlights

Tuesday, March 27, 2013  
Bank of Hawaii

## **Approval of Minutes:**

The minutes of the February 26, 2013 Board of Directors Meeting were approved.

## **Treasurer's Report:**

- As of February 28, 2013, unaudited account balances were as follows:
  - General Operating Account - \$79,721.60
  - B/C/DP - \$28,707.81 (before adjustments)
- The March 2013 disbursements and financial reports for February 2013 were approved.
- Treasurer has also submitted a change in contact for our P.O. Box.

## **Committee Reports:**

### **ASIST – Karen Mendes**

- Board discussion on speaker selection.
- Application deadlines: April 6 with second deadline on April 12. Finalists' application to judges on May 3.
- Judges: Bob Charlet (Pacific Business News), Walter Kirimitsu (St. Louis School) and Wendy Abe (Blood Bank of Hawaii).
- Interviews on May 18 at the Sheraton Waikiki.
- ASIST dinner at Oahu Country Club, Theme: "Nurture Your Dreams"

### **Communications and Marketing – Kelly Nishimura**

- April's Connect newsletter will include Straw Ballots for 2013-2014 Officers and Directors and the nomination form for the 2013 Na Wahine Alaka`i Award.
- April's Membership Drive Event flyer (highlighting our special guest speaker) has been posted to the "Events" page of our website as of Friday, March 1.
- Website content:
  - 2013 Golf Tournament Application and brochure were uploaded to the website as of Friday, March 1.
  - New member firm listing has been updated as of Friday, March 1.
  - On the "Member Firms" page, any missing hyperlinks will be added.
  - Golf tournament icon with link to brochure/application will be added.
  - Shelley Okubo's firm name will be revised to "Aqua Hospitality".

### **EWISP – April Tengan**

- The committee received a total of 20 applications from which nine semi-finalists were selected. Copies of these applications were delivered to the judges.
- Interview session will be held on April 13 at C.S. Wo & Sons.
- Awards Dinner will be held on May 8.
- Committee discussed winner's gifts, decorations, etc. and is awaiting speaker confirmation.

## **2012-2013 Officers & Directors**

### **President**

Nadine Uratsuka, Accuity, LLP

### **VP/President-elect**

Cora Kim, Hawaii Prince Hotel Waikiki

### **Secretary**

Susan Miyabara, Punahou School

### **Treasurer**

Wanda Sanchez, Bank of Hawaii

### **Ways & Means**

Pam Unabia, Allied Builders System

### **Membership Director**

Roseann Bronston, Archipelago Hawaii

### **Sergeant-at-Arms**

Jocelyn Palafox, go! Airlines

### **Programs**

Rosanna Costales, Pacific Business News

### **EWISP Director at Large**

April Tengan, Hawaii Medical Service Association (HMSA)

### **Communications & Marketing Director**

Kelly Nishimura, Remedy Intelligent Staffing

## **Appointed Positions**

### **Advisor**

Shelley Okubo, Aqua Hospitality

### **Bylaws/Parliamentarian**

Brenda Kanno, Research Corporation of the University of Hawai'i

### **ASIST Chair**

Karen Mendes, APP Hawaii

### **Philanthropy Chair**

Leianne Pedro, Olsten Staffing

**Membership – Roseann Bronston**

- Total: 48 member firms, 52 representatives, 1 sustaining member, 1 life chapter member,
- Committee's goal for total member firms is 60.
- Membership night: April 10, 2013, Tsukiji Fish Market & Restaurant at Ala Moana.

**Philanthropy – Lianne Pedro**

- Committee has planned monthly events through December as follows:
  - Friday, April 12, 2013
    - Hana Hou Jazzercise Hour with Roseann Bronston
    - Share water and fruit with the residents
  - Friday, May 10, 2013
    - Possible brunch service 10 am or 12 pm
    - Massage and make-up pampering before Mother's Day
  - June 2013 – date tbd
    - Herb Garden sponsored by EWI of Honolulu and Sheraton Waikiki. Cultivate an herb garden for the residents as they make healthy choices with food too!
  - Saturday, July 20 from 1-4 pm
    - Ohana activity for EWI and the residents' families complete with BBQ meal, games and fellowship
  - Friday, October 18 – Octoberfest
    - "Back to Books" reading day/night, book drive for the children, present the books as gifts for each child and read for 15 minutes
  - Friday, November 8
    - Attitude of Gratitude event, create Thank You Cards with residents and children
  - Friday, December 6
    - Holiday Cookie Decorating / Ornaments

**Program – Rosanna Costales**

- May 8, 2013 (EWISP)  
Location: Waiālae Country Club
- June 12, 2013 – Business meeting  
Location: Sheraton Waikiki, Honolulu Suite  
Program: Business  
Cost: \$50 (buffet, wine hosted, includes parking)
- July 10, 2013 (ASIST)  
Oahu Country Club
- August 14, 2013 – Membership Meeting  
Program: Progressive meeting requiring participation from 3 EWI member firms located in downtown
- September 11, 2013  
Location: The Plaza Club  
Program: Business/Installation  
Cost: \$40 per person (buffet)

**DATES TO NOTE****May 8, 2013**

EWISP Awards Dinner,  
Waiālae Country Club

**May 10, 2013**

Philanthropy's Beauty &  
Pampering Event, Salvation  
Army Women's Way 6:00 –  
7:30 pm

**June 12, 2013**

Business Meeting, Sheraton  
Waikiki, Honolulu Suite

**July 10, 2013**

ASIST Awards Dinner,  
Oahu Country Club

**July 20, 2013**

Philanthropy's Family  
Fellowship BBQ, Salvation  
Army Women's Way 1:00 –  
4:00 pm

**August 14, 2013**

Membership Meeting,  
Location tbd

**August 23, 2013**

18th EWI Annual Golf  
Tournament, Hawaii Prince  
Golf Club

**September 11, 2013**

Business Meeting,  
The Plaza Club

**September 18-21, 2013**

LCAM (EWI's 75th  
Anniversary), San Diego

**October 9, 2013**

Membership Meeting,  
Location tbd

**October 18, 2013**

Philanthropy's Bookfest &  
Reading Rally, Salvation  
Army Women's Way 6:00 –  
7:30 pm

**November 8, 2013**

Philanthropy's Attitude of  
Gratitude Crafting, Salvation  
Army Women's Way 6:00 –  
7:30 pm

**November 13, 2013**

Membership Meeting, 3660  
On The Rise

**December 4, 2013**

Membership Meeting,  
Location tbd

**December 6, 2013**

Philanthropy's Holiday  
Cookie Decorating,  
Salvation Army Women's  
Way 6:00 – 7:30 pm

**Sergeant-at-Arms – Leah Harvell for Jocelyn Palafox**

- There were 25 representatives, 0 sustaining, 7 guests, 5 no-shows at the March 13 membership meeting. 23 of 48 firms in attendance.
- Board to work with Sergeant-at-Arms on procedures and follow-up with membership regarding charge card payments.

**Ways and Means – Pam Unabia**

- Report indicates that monies have started to come in for teams and direct donations.
- Committee looking into other fundraising options.

**Unfinished Business:**

No unfinished business to report..

**New Business:**

No new business to report.

**Next Meetings:**

- The April Membership Meeting is scheduled for Wednesday, April 10, 2013 at 5:30 pm at Tsukiji Fish Market & Restaurant.
- The next Board of Directors Meeting is scheduled for Tuesday, April 23, 2013 at 5:30 pm at the HMSA Center.

The meeting adjourned at 1:02 pm.



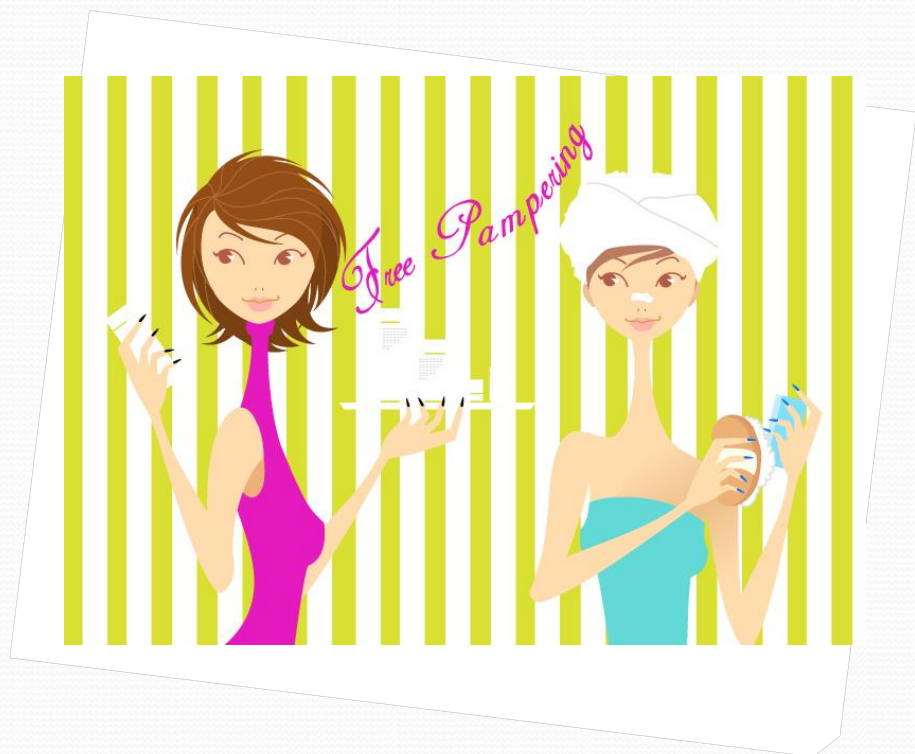
**EWI Honolulu  
Philanthropy  
Committee  
Presents...**

An opportunity to serve our friends at The Salvation Army Women's Way Program

Help us bless the residents as they make healthy lifestyle choices and break their addictions with pampering massages, facials, make up tips and more!

*We need volunteers for childcare, assistance for the "beauty and massage experts"*

May 10<sup>th</sup> – 6:00-7:30pm  
845 22<sup>nd</sup> Avenue  
Call Leianne at 343-5396 to volunteer your support!





**Philanthropy  
Committee  
SAVE THE DATES!**

**Support The Salvation  
Army's Women's Way  
Program**

- Saturday, July 20<sup>th</sup> Family Fellowship BBQ – 1 to 4pm
- Friday, Oct. 18<sup>th</sup> Bookfest and reading rally 6-7:30pm
- Friday, Nov. 8<sup>th</sup> Attitude of Gratitude crafting 6-7:30pm
- Friday, Dec. 6<sup>th</sup> Holiday cookie decorating 6-7:30pm



## Getting to Know You

**Candace Yuen**  
**Senior Sales Manager**  
**Aston Waikiki Beach Hotel**

Candace has been in the hospitality industry for over 13 years, in both the airline and hotel industries. Candace graduated from the University of Hawaii with a Bachelor's Degree in Travel Industry Management. She worked at Aloha Airlines in Honolulu and moved to San Francisco to work in its sales office. After moving back home in 2007, Candace started her hotel career as a Sales Manager at the Ala Moana Hotel, and is currently the Senior Sales Manager at the Aston Waikiki Beach Hotel.

In her spare time, Candace enjoys playing with Manju, her Pomerian/Poodle, taking tai chi classes, and shopping. She also loves traveling, eating, and spending time with friends. She looks forward to working on the Ways & Means Committee, and participating in future EWI events!

Email: [candace.yuen@astonhotels.com](mailto:candace.yuen@astonhotels.com)  
Phone: 808.921.6272

---

**Wanda Takita**  
**Senior Sales Manager**  
**Hyatt Regency Waikiki Beach Resort & Spa**

Wanda Takita joined Hyatt Hotels & Resorts in 1993 as a Corporate Sales Manager in Los Angeles, and has been delighting clients and guests alike with her genuine passion for service and excellence. She holds a Bachelor of Arts degree in Psychology and has over twenty years of hospitality management experience. The Hyatt Regency Waikiki Beach Resort and Spa provided her an opportunity to return to the islands in 2008 as a Senior Sales Manager to develop the corporate and airline crew market. Wanda has been consistently recognized as a longstanding member of the distinguished "Hyatt Masters". Previously, Wanda held various sales management positions in the Los Angeles area. She has worked in Tokyo, Orange County and currently in Honolulu where she maintains a very active life with her family, friends and church.

Wanda serves on the Philanthropy Committee.



Email: [wanda.takita@hyatt.com](mailto:wanda.takita@hyatt.com)  
Phone: 808.237.6221

**Leianne Pedro  
General Manager  
Olsten Staffing & Executive Search Services**

Although not new to EWI, Leianne has been a representative with EWI since September 2010 while working at member firm Pacific Business News as the Director of Business Development/Marketing/Circulation, and most recently at member firm Hagadone as the VP of Sales & Marketing. Leianne's new career adventure as of May 2013 is the General Manager at Olsten Staffing & Executive Search Services. It will require her to utilize people skills, emotional intelligence, multi-tasking, efficiency, flexibility and intuitiveness to help businesses by helping people find jobs. She will lead strategic planning, new business and growth opportunities and oversee all of Olsten's operations along with Signe Godfrey, the President/Owner.

A 5th generation Hawaiian with roots in the Hawaiian music and entertainment industry, Leianne attended the University of Oregon before returning home to graduate from UH Manoa with a Bachelor's degree in Communications/Advertising. Married for 23 years to James Pedro, they are raising their four children (Kylee 21, Wyatt 19, Cade 15 and Halee 13) in Kailua. In her spare time, she enjoys supporting her children in any of the sports they participate in whether it is on the football field, volleyball court, track field or basketball court. "EWI is an important part of my professional and personal acumen and growth. Wherever I go, so will EWI come with me! I can't imagine not being involved in this fine business organization!"

Leianne is the 2012-2013 Philanthropy Chair.



Email: [leianne.pedro@olsten.com](mailto:leianne.pedro@olsten.com)  
Phone: 808.523.3313

**Happy Birthday!**

Candace Yuen, Aston Hotels	May 3
Joan Graham, Coldwell Banker Pacific Propertie	May 7
Jocelyn Palafox, Go! Airlines	May 16
Francine Lee-Kadota, Meridian Properties, Inc.	May 19
Maegan Brandt, Insurance Solutions, LLC	May 23



# DID YOU KNOW . . .

## ***Part 2 – Who is responsible for the affairs of EWI of Honolulu?***

The President is the Chief Executive Officer of the Chapter and presides at all meetings of the Chapter and of the Chapter Board. The President is a member of the Chapter Board and has general charge of the business of the Chapter.

The Vice President is the President-Elect and is vested with all the powers and would perform all the duties of the President in case of the absence or disability of the President. The Vice President/President-Elect will have such other powers and perform such other duties as may be delegated by the President or by the Chapter Board.

The Secretary keeps and has charge of the minutes of all meetings of the Chapter and of the Chapter Board, serves notices of all meetings of the Chapter and of the Chapter Board, executes official documents, with the President, in the name of the Chapter; is custodian of the Chapter seal, keeps the Bylaws and such other papers as the Chapter Board may direct, and performs all the duties incident to the office of Secretary, subject to the control and direction of the Chapter Board.

The Treasurer keeps full and accurate accounts of receipts and disbursements, receives and deposits all money and all valuables of the Chapter in the name and to the credit of the Chapter in depositories designated by the Chapter Board, disburses the funds of the Chapter, sends each Member Firm notice of annual assessments and/or notice of delinquency, if required, and performs all duties incident to the office of Treasurer, subject to the control and direction of the Chapter Board.

The Sergeant-At-Arms keeps complete records of the Representatives' attendance at meetings, has charge of all reservations, and performs such other duties as may be assigned by the President or the Chapter Board.

The Membership Director leads and directs the membership activities of the Chapter in the recruitment and retention of Member Firms.

The Program Director has general charge of planning and arranging the programs for the regular meetings of the Chapter.

The Communications and Marketing Director is responsible for the preparation, publication and distribution of the Chapter's newsletter, website information, public relations and communications for the Chapter.

The Ways and Means Director is charged with the direction and supervision of any special activities for the purpose of supplementing Chapter operating funds and/or fund-raising activities to support the Chapter's Business/Career/Development Program (B/C/DP).

Chapters have the option of electing to the Chapter Board a Director (Director-at-Large) whose assignments will be designated by the Chapter Board. EWI of Honolulu has designated this position as the EWISP Director, who is responsible for the administration of the EWI Scholarship Program for high school seniors.

---

*This corner of information is to help us understand the various facets of our organization. If you have a question or suggestion for other topics, please let your Board members know and we'll be happy to share the information in future articles!*

# Lunch Bunch Downtown

*By Sheri Tamayose*

On Thursday, March 28, 2013, EWI of Honolulu members gathered at the downtown Hukilau Restaurant for lunch. After introductions, the group networked and shared information about EWI. There was a great mix of seasoned and new members, and the food was delicious! From time to time, there will be other lunch bunch clusters organized throughout the year, so stay tuned!



*(standing from left to right):* Akiko Sakamoto (Northwestern Mutual Financial Network), Joyce Gooman (Executive, Lamination House, Inc.), Rosanna Costales (Pacific Business News) and Brenda Kanno (The Research Corporation of the University of Hawaii)

*(seated from left to right):* Shelley Okubo (Aqua Hospitality), Sheri Tamayose (First Hawaiian Bank), Abigail Jacinto (Robert Half International), Candace Yuen (Aston Hotels) and Eleanor Rego (Lamination House, Inc.)

## SAVE THE DATE

### 18th ANNUAL EWI GOLF TOURNAMENT

**Friday, August 23, 2013**

HAWAII PRINCE GOLF CLUB  
 91-1200 FORT WEAVER ROAD  
 EWA BEACH